

ACTION PACKER BAJA BIN



Thank you for purchasing the Action Packer Baja Bin. Made of aluminum to cut down on weight, you must adequately support the bottom of the Baja Bin using at least 4 holes on the bottom of the mount. Failure to do so may permanently destroy the bin during hard use.

A brand new action packer will fit tightly. After a few uses the plastic will “shrink” and conform.

Each hole of the Baja Bin can be dimple died if desired; this will increase the rigidity of the bin.

Note: the laser cut edges of the bin are sharp.

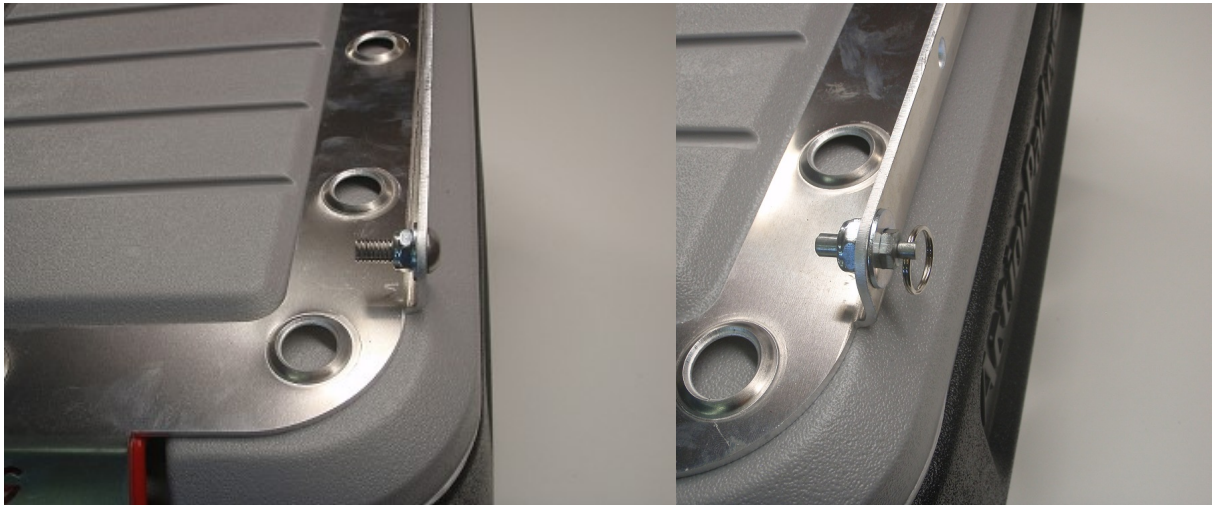
Please send me some pictures of the Baja Bin on your vehicle to sales@swagoffroad.com. We will add them to my web site.

If applicable install the hinge as shown below for the 8 gallon action packer bins.

When using the bin under extreme conditions, It is necessary to tightly pack the box full so contents are not able to move with a towels or ???. If you have an 8lb impact gun flopping around it will eventually destroy the box as well as the latch and or the aluminum bin.



If you purchased the Aluma-Lid for the 8 gallon action packer attach the pull ring detent pins as shown on the front of the mount **NOTE:use extreme caution as they can easily shear when over tightened, just tighten until they are snug.** Attach the rear 3/8" bolts as shown below.



THANK YOU FOR YOUR PURCHASE

INNOVATIVE FABRICATION TOOLS & OFFROAD EQUIPMENT

Porta-band Stand Drop Down Tailgate DIY Press Brake HF Tubing Rollers Baja Bin

541-915-2775

JOIN US ON facebook WWW.SWAGOFFROAD.COM



WWW.SWAGOFFROAD.COM

“DOING ORDINARY EXTRAORDINARY”